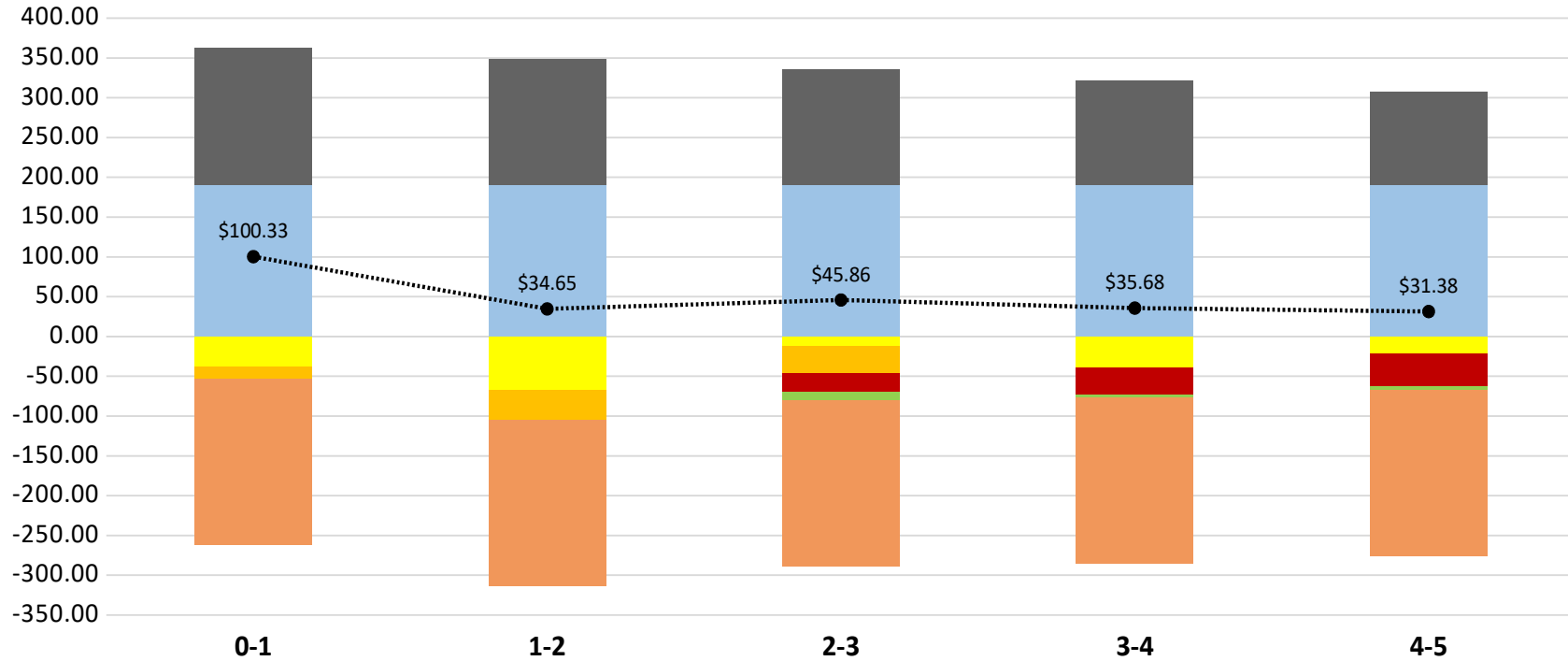
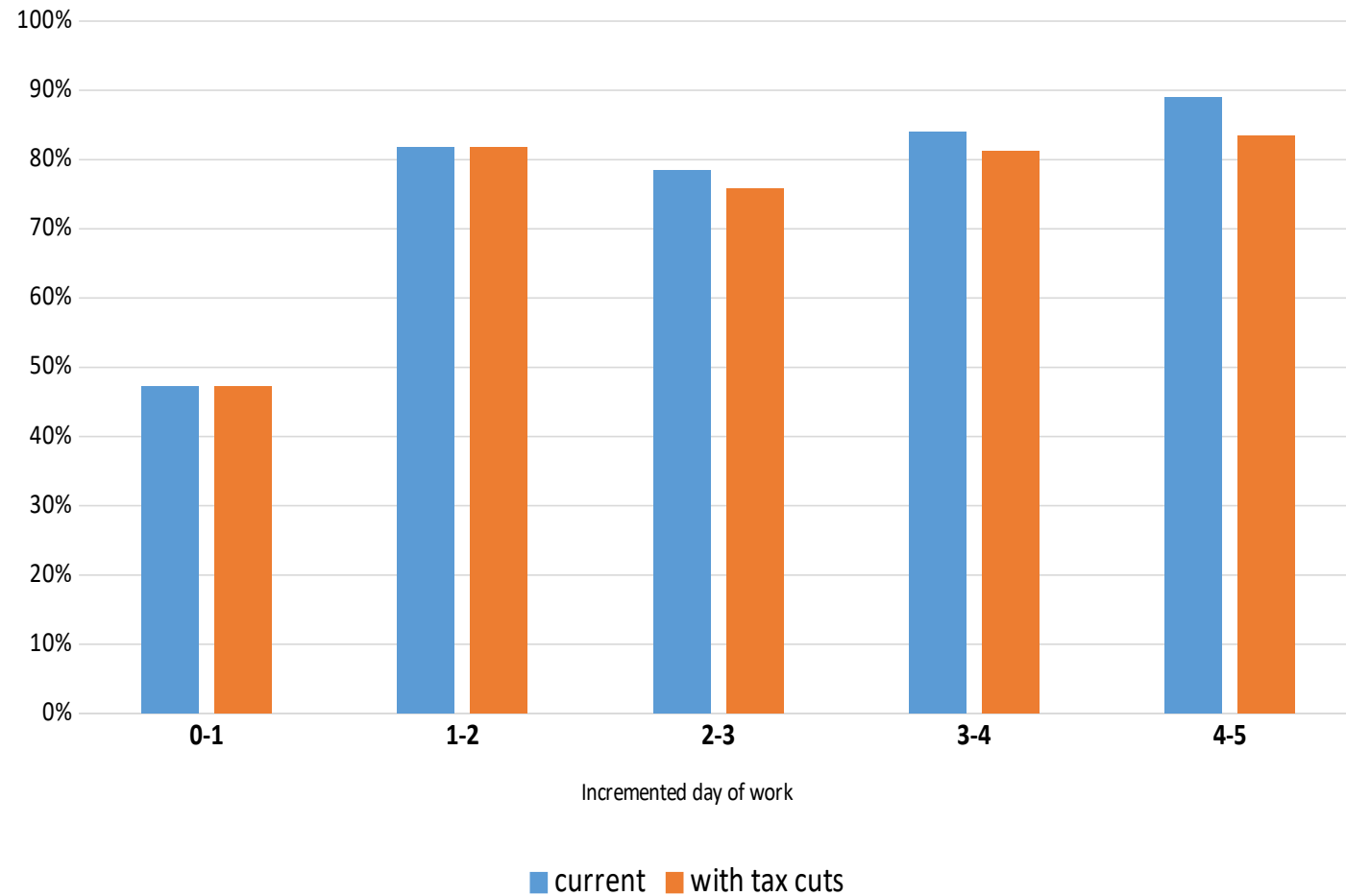


**Net gain from each additional day worked by second earner: median wage family,
 25 Sep 2020 including Stage 2 tax cuts
 P1 @ \$1275 per week; P2 @ \$190 per day. 2 children (2, 3); childcare \$10.40 per hour**

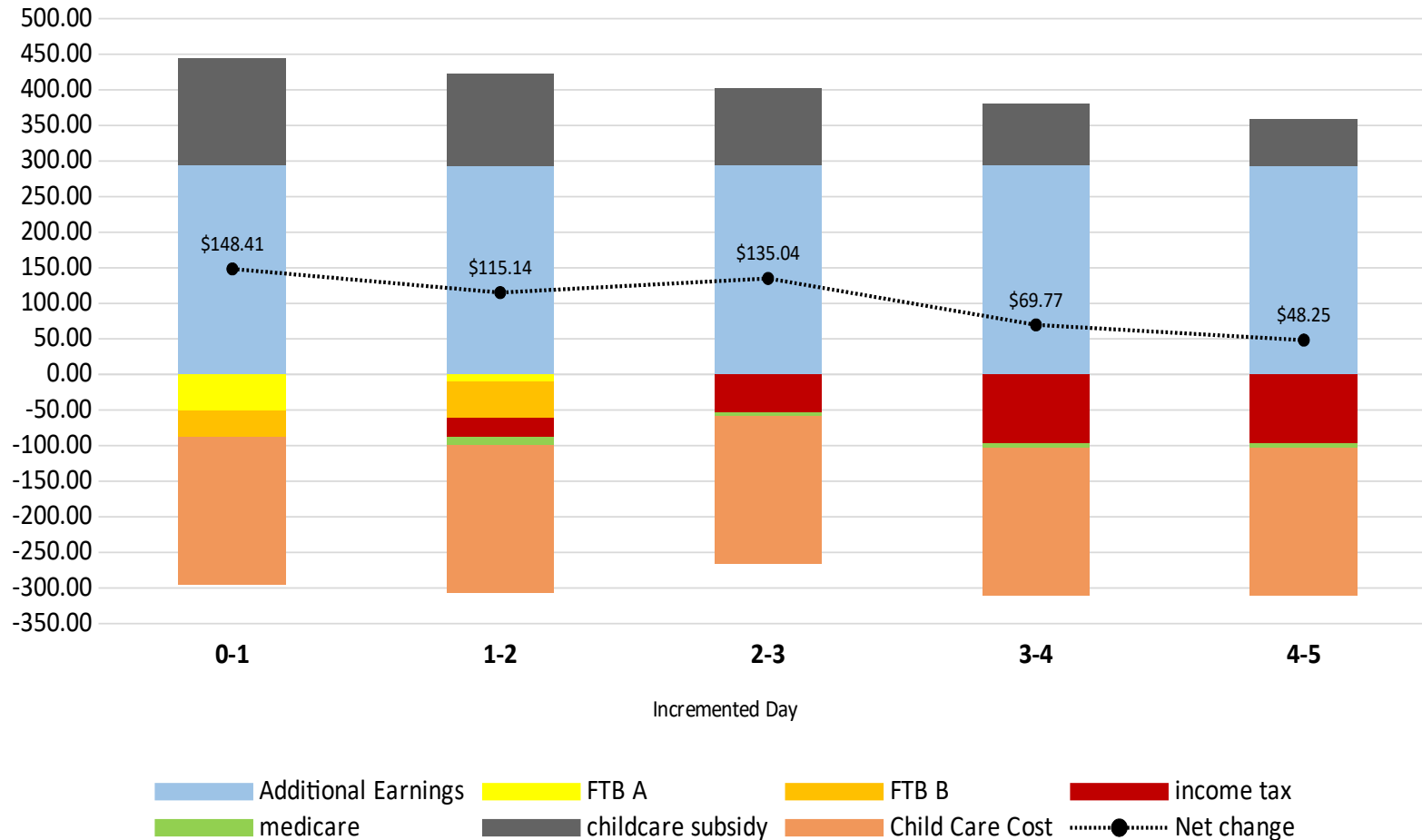


■ Additional Earnings
 ■ FTB A
 ■ FTB B
 ■ income tax
■ medicare
 ■ childcare subsidy
 ■ Child Care Cost
●..... Net change

**Percentage of additional earnings lost to taxes, transfers and child care costs Median wage family, with Stage 2 tax cut
P1 @ \$1275 per week; P2 @ \$190 per day. 2 children (2, 3); childcare \$10.40 per hour**



Net gain from each additional day worked by second earner
Average wage family, 25 Sep 2020 plus tax cuts
P1 @ \$1780.70 per week; P2 @ \$293.82 per day. 2 children (2, 3); childcare \$10.40 per hour



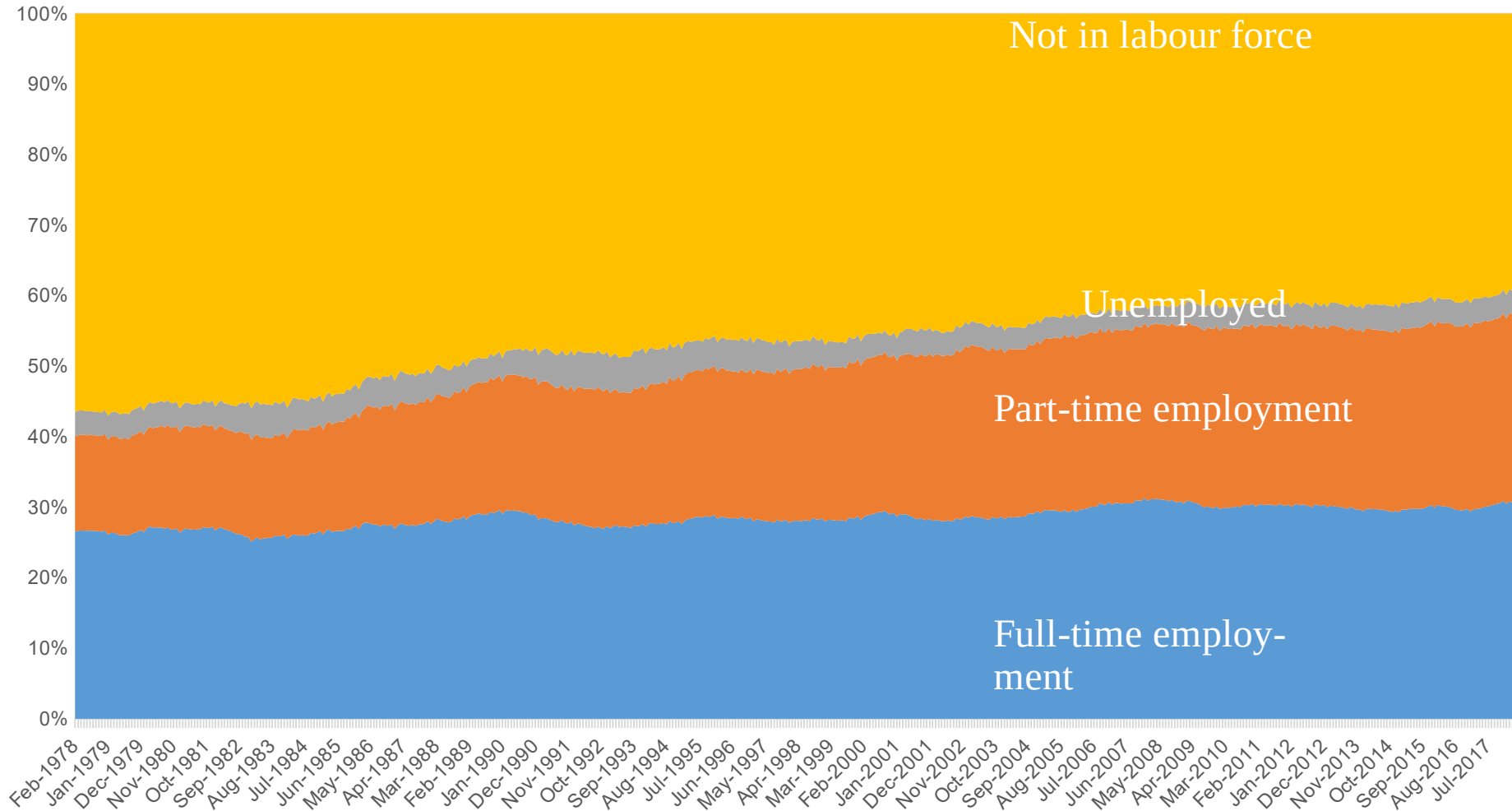
Source: Chart by David Plunkett

Net gain from each additional day worked by sole parent on average female wage
 25 Sep 2020 plus tax cuts
 \$293.82 per day. 2 children (2, 3); childcare \$10.40 per hour



Source: Chart by David Plunkett

Labour force participation patterns of women, 1978 - 2018



Source: Chart by Kristen Sobeck, TTPI